

FUGLEKASSE



UTSTYR DU TRENGER:



Skruer, topp og bunn, sidevegger x 4



Borejigg fuglehull og borejigg til takkloss



Borejigg skruer hull front – og bakvegg



Monteringsjigg for fuglekassevegger og takkloss



Borejigg fuglehull

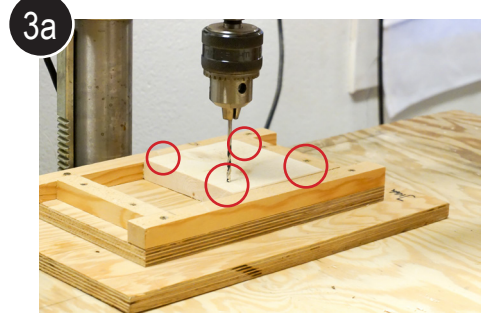
FUGLEKASSE - fremgangsmåte



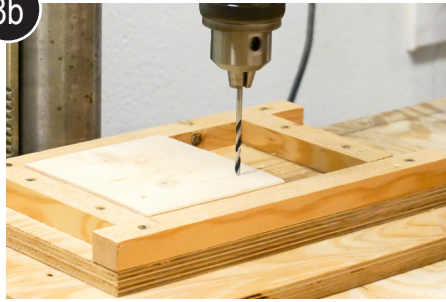
1 Legg i frontvegg i jigg



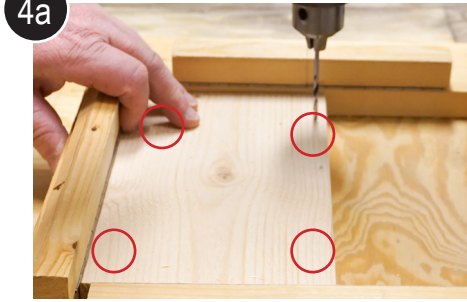
2 Bore fuglehull i frontvegg



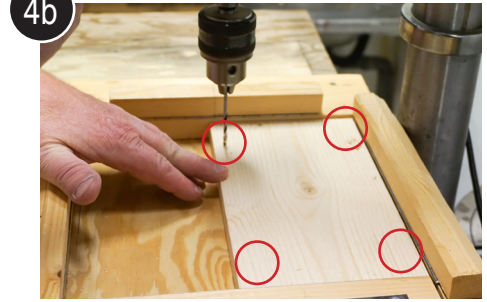
3a Forbore takkloss (Fire hull - se røde ringer)



3b Forbore takkloss



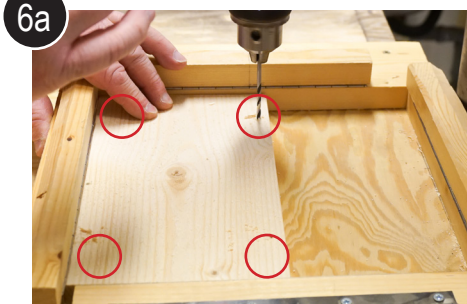
4a Forbore bakvegg



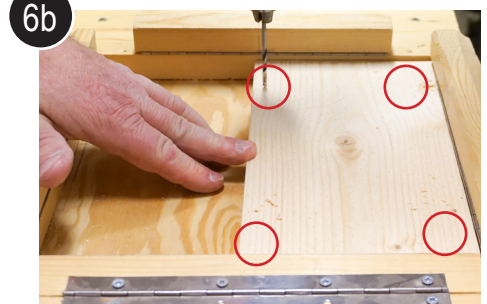
4b Forbore bakvegg



5 Snu bakvegg



6a Bor bakvegg



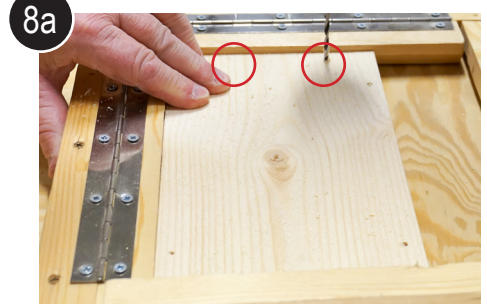
6b Bor bakvegg



7a Juster jigg



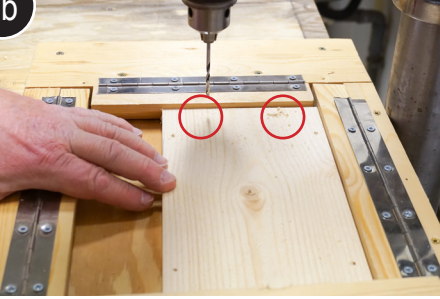
7b Juster jigg



8a Forbore front – og bakvegg for bunnkloss

FUGLEKASSE - fremgangsmåte

8b



Forbore front – og bakvegg for bunnkloss

9a



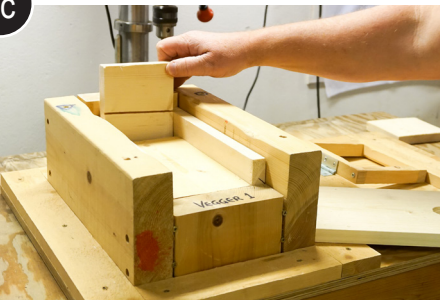
Legg sidevegger og bunn i monteringsjigg for frontvegg

9b



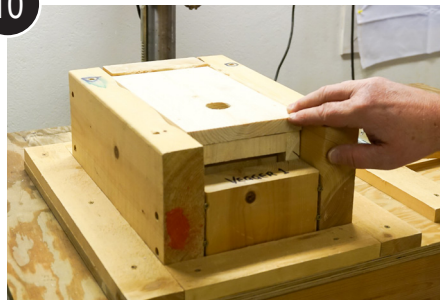
Legg sidevegger og bunn i monteringsjigg for frontvegg

9c



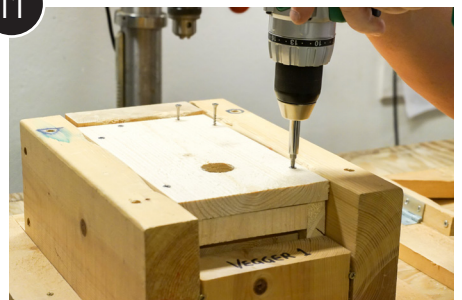
Legg sidevegger og bunn i monteringsjigg for frontvegg

10



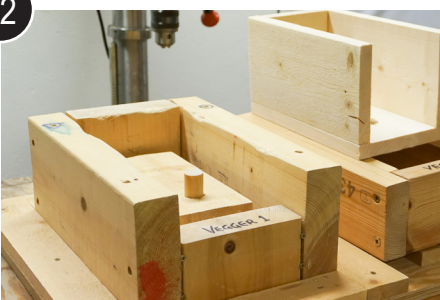
Legg frontvegg i jigg

11



Skru fast frontvegg

12



Jigg med fuglehullstapp

13



Sett fuglehullvegg på tapp

14



Sett sammen monteringsjiggene

15



Montere bakvegg

16a



Montere takkloss

16b



Montere takkloss

FUGLEKASSE - fremgangsmåte

17



Sett taket på fuglekassa

18



Ferdig fuglekasse